



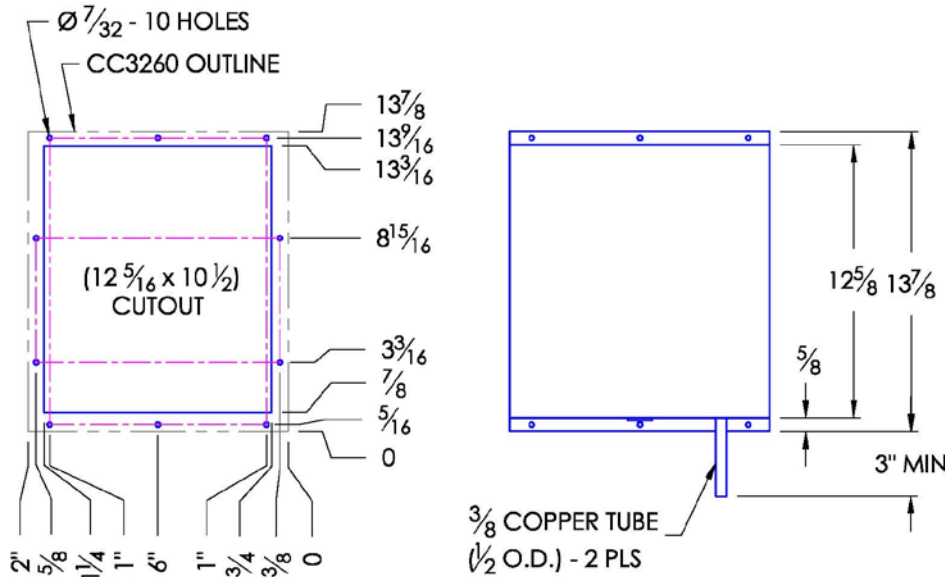
CC3260 & CC3260P* COMPACT CABINET COOLER AIR-TO-WATER FLUSH MOUNT MODEL

Model	Weight	Rating @ 40°C ΔT BTU / hr	Amps Current Draw at 115 volts AC	Fan Size	Dimensions-Inches (H x W x D)
CC3260	13 lbs	8,600	0.3	1 x 6"	13-7/8 x 12 x 7-7/8

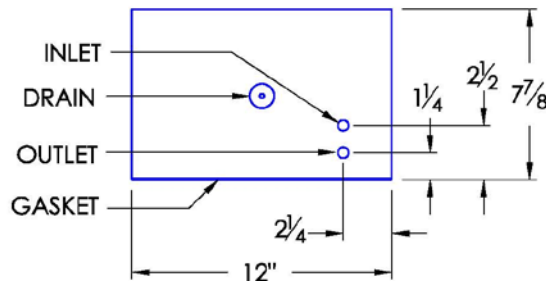
Efficiency : 62.7 Watts / °C ΔT based on average internal cabinet temperature.



Available upon request



CABINET HOLE PATTERN
(EXTERNAL VIEW)

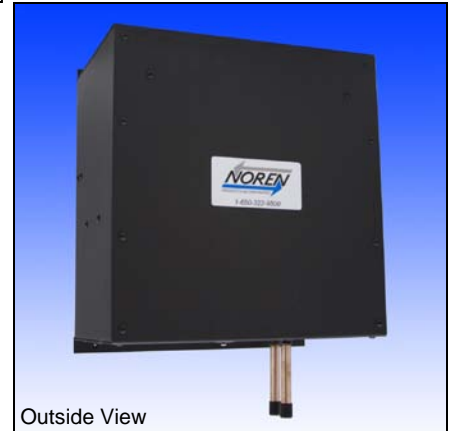


[SEE HOW CABINET COOLERS WORK - CLICK HERE >>](#)



SPECIFICATIONS

1. RATED COOLING: 2,508 WATTS (MOUNTED TO AN UNINSULATED 72" x 36" x 24" CABINET WITH 1 GPM OF WATER AT 20°C, 40°C AMBIENT AIR AND 60°C CABINET AIR TEMPERATURE).
2. DESIGNED FOR SURFACE MOUNTING ON THE OUTSIDE OF CABINET.
3. ALUMINUM HOUSING (COLOR IS BLACK) OR STAINLESS STEEL.
4. EXTERNAL WATER INLET AND OUTLET CONNECTIONS.
5. EQUIPPED WITH MOUNTING GASKET TO MAINTAIN AIR TIGHT SEAL.
- * 6. "P" UNIT IS PRESSURE TESTED TO ASSURE WATER TIGHT SEAL.
7. UL / cUL LISTED UNITS ALSO AVAILABLE UPON REQUEST (UL FILE # SA9567).
8. AVAILABLE WITH 115VAC, 230VAC, AND 12VDC, 24VDC, 48VDC FANS.
9. VERTICAL MOUNTING ONLY.
10. COOLANT WATER PRESSURE: THIS UNIT IS PRESSURE TESTED TO 100 PSI. SAFE WORKING PRESSURE IS 60 PSI.
11. RECOMMENDED COOLANT FLOW RATE (GALLONS PER MINUTE): 1 GPM



Outside View



Inside View



Side View



CC3260 & CC3260P*

883321