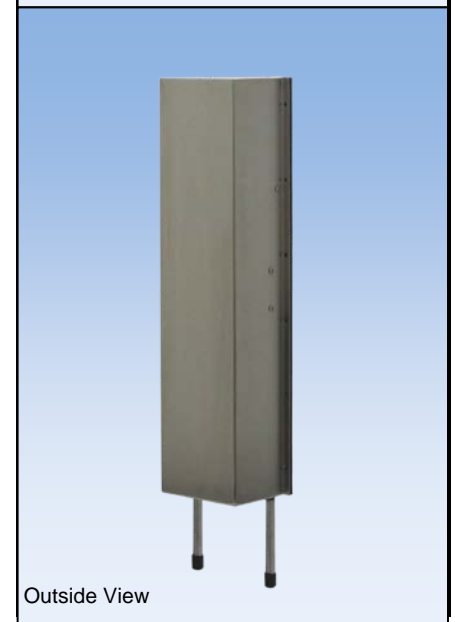
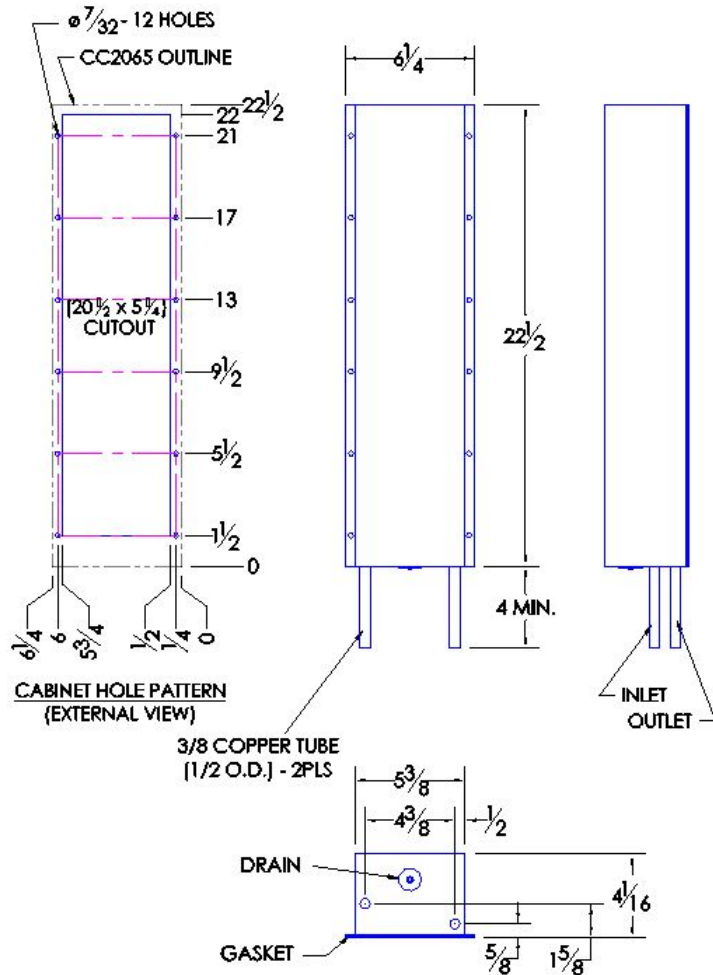




Hazardous Locations, Class 1, Division 2, Group A, B, C and D CC2065PHL-TYPE 4X, xxx, Class 1/Div 2 COMPACT CABINET COOLER AIR-TO-WATER FLUSH-MOUNT MODEL

Model	Weight	Rating @ 20°C ΔT BTU / hr	Amps Current Draw at 115 volts AC	Fan Size	Dimensions-Inches (H x W x D)
CC2065PHL	9 lbs.	3,350	0.25	1 x 4"	22-1/2 x 6-1/4 x 4-1/16

Efficiency: 24.5 Watts / °C ΔT based on average internal cabinet temperature.



SPECIFICATIONS

1. UL Listed for TYPE 4X environments, Hazard Location Class 1 / Div 2
2. CC2065 Rated cooling: 982 Watts mounted to an uninsulated 24" X 24" X 16" Cabinet with 1 GPM of water at 20°C, 40°C ambient air and 60°C cabinet air Temperature (Temp Code T4).
3. Designed for surface mounting on the outside of cabinet.
4. Housing is Stainless Steel (TYPE 316)
5. External water inlet and outlet connections.
6. Equipped with mounting gasket to maintain the TYPE 4X integrity of your cabinet.
7. Pressure tested to insure liquid tight seal.
8. Internal 6-ft power cord.
9. Available with DC and AC (48VDC, 115VAC & 230VAC). Designation xxx indicates voltage.
10. Vertical mounting (as shown) only.
11. Coolant water pressure: Pressure tested to 100 psi. Safe working pressure is 60 psi.
12. Recommended coolant flow rate (gallons per minute): 1 GPM
13. For design, quote, and sizing assistance: call (888) 754-6329.



UL File #E468211

Assembled in the USA of
Foreign and Domestic Materials

ISO 9001:2008
FM 554949



Pelmar Engineering Ltd.

Tel. (888) 754-6329
sales@pelmareng.com
www.pelmareng.com

CC2065PHL-TYPE 4X, xxx

Class 1/Div 2

CCS-PBD-7.2.2-883620-A